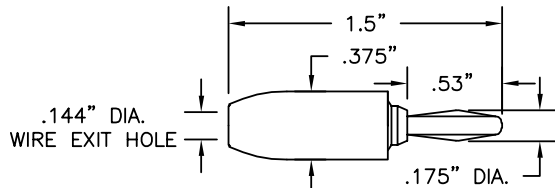


BANANA PLUGS

STANDARD BANANA PLUG

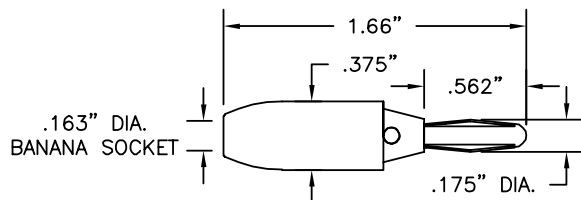


| Part No. | Description |
|----------|----------------------|
| 9202 | Standard Banana Plug |

Construction: Nylon handle. Nickel-plated brass body. Nickel silver spring. Solderless assembly.

Colors: Available in 10 colors. See inside back cover for details.

STACKING STANDARD BANANA PLUG

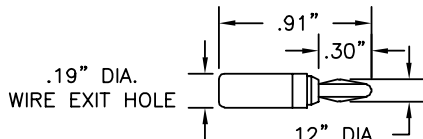


| Part No. | Description |
|----------|-------------------------------|
| 9203 | Stacking Standard Banana Plug |

Construction: Nylon handle. Nickel-plated brass body. Phosphor bronze spring. Solderless assembly.

Colors: Available in 10 colors. See inside back cover for details.

MINIATURE BANANA PLUG

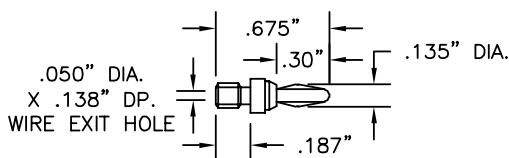


| Part No. | Description |
|----------|-----------------------|
| 9213 | Miniature Banana Plug |

Construction: Plastic handle. Nickel-plated phosphor bronze body. Beryllium copper spring. Solder assembly.

Colors: Available in 10 colors. See inside back cover for details.

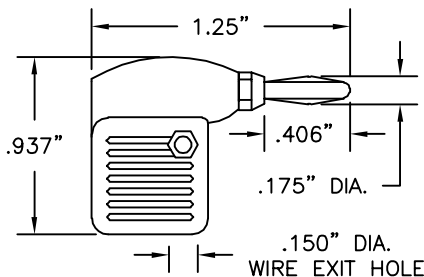
MINIATURE BANANA PLUG WITH 6-32 THREAD



| Part No. | Description |
|----------|-----------------------------------|
| 8201 | Mini Banana Plug with 6-32 Thread |

Construction: Nickel-plated phosphor bronze body. Beryllium copper spring. Solder assembly. Thread size 6-32.

METER BANANA PLUG

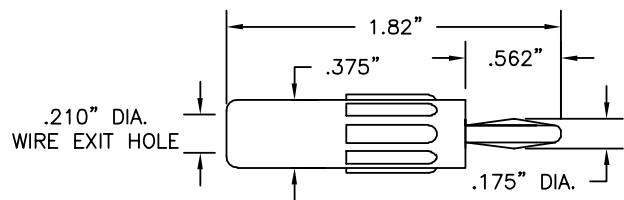


| Part No. | Description |
|----------|-------------------|
| 9206 | Meter Banana Plug |

Construction: Plastic handle. Nickel-plated brass body. Nickel-plated beryllium copper spring. Solder assembly.

Colors: Available in red and black.

BANANA PLUG FOR HEAVY WIRE

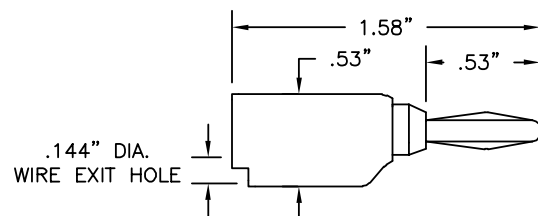


| Part No. | Description |
|----------|----------------------------|
| 9214 | Banana Plug for Heavy Wire |

Construction: Plastic handle. Nickel-plated brass body. Phosphor bronze spring. Solderless assembly.

Colors: Available in red and black.

STACKING STANDARD BANANA PLUG FOR HEAVY WIRE

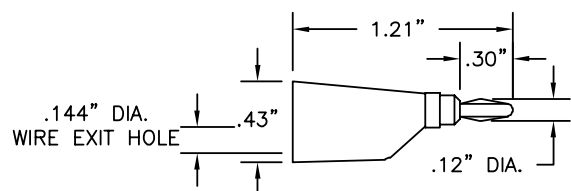


| Part No. | Description |
|----------|--|
| 9260 | Stacking Standard Banana Plug for Heavy Wire |

Construction: Plastic handle. Nickel-plated brass body. Phosphor bronze spring. Snap together solderless assembly.

Colors: Available in 10 colors. See inside back cover for details.

STACKING MINIATURE BANANA PLUG

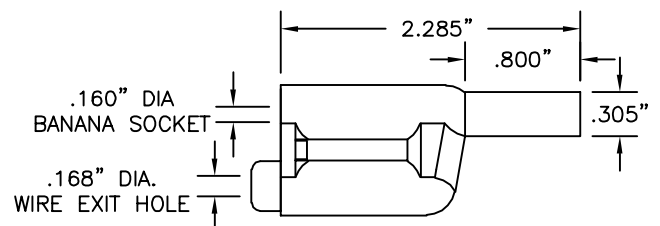


| Part No. | Description |
|----------|--------------------------------|
| 9261 | Stacking Miniature Banana Plug |

Construction: Plastic handle. Nickel-plated phosphor bronze body. Nickel-plated brass socket. Beryllium copper spring. Solderless assembly.

Colors: Available in 10 colors. See inside back cover for details.

STACKING SHROUDED BANANA PLUG, ACCEPTS SHROUDED BANANA PLUGS



| Part No. | Description |
|----------|---|
| 9383 | Stacking Shrouded Banana Plug, Accepts Shrouded Plugs |

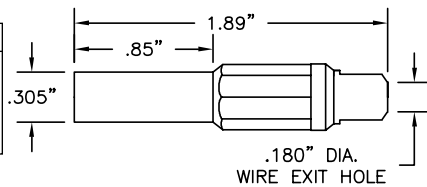
Construction: Housing is two piece molded nylon. Banana socket & plug are a one piece machined brass section with a beryllium copper contact spring. Banana plug tip is insulated. Wire connection is solderless. (IEC 1010 Compliant)

Colors: Red, black, yellow, green, blue and white.

BANANA PLUGS

STRAIGHT SHROUDED BANANA PLUG

| Part No. | Description |
|----------|-------------------------------|
| 9386 | Straight Shrouded Banana Plug |

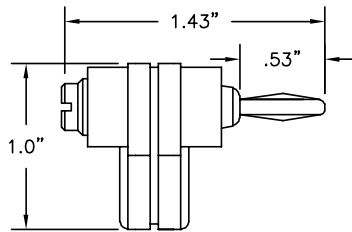


Construction: Housing is one piece molded nylon. Banana plug is machined brass with a contact spring all nickel plated. Banana plug tip is insulated. Wire connection is soldered. (IEC 1010 Compliant)

Colors: Available in red and black.

RIGHT ANGLE STANDARD BANANA PLUG

| Part No. | Description |
|----------|----------------------------------|
| 9304 | Right Angle Standard Banana Plug |

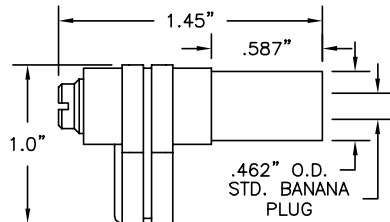


Construction: Nickel-plated brass body. Nickel-plated beryllium copper spring. Plastic handle. Solderless assembly.

Colors: Available in red and black.

SHROUDED RIGHT ANGLE STANDARD BANANA PLUG

| Part No. | Description |
|----------|---|
| 9301 | Shrouded Right Angle Standard Banana Plug |



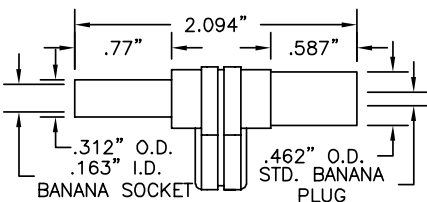
Fits most **AMPROBE** and **BECKMAN** instruments with recessed receptacles for shrouded plugs.

Construction: Nickel-plated brass body. Nickel-plated beryllium copper spring. Plastic handle. Solderless assembly.

Colors: Available in red and black.

STACKING SHROUDED RIGHT ANGLE STANDARD BANANA PLUG

| Part No. | Description |
|----------|---|
| 9306 | Stacking Shrouded Right Angle Standard Banana Plug/Socket |



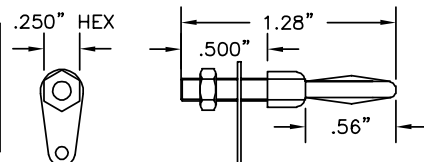
Fits most **FLUKE**, **B&K PRECISION**, **HP**, **BECKMAN**, **AMPROBE**, **METERMAN**, and **GREENLEE** instruments with recessed receptacles for shrouded plugs.

Construction: Nickel-plated brass body and socket. Nickel-plated phosphor bronze spring. Plastic handle. Solderless assembly.

Colors: Available in red and black.

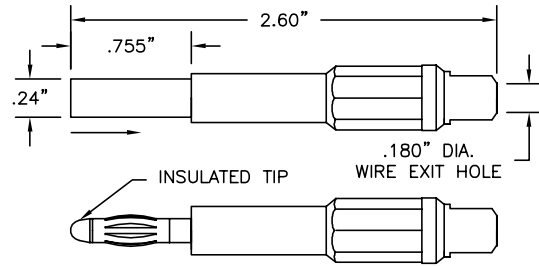
STANDARD BANANA PLUG 6-32 STUD MOUNTING

| Part No. | Description |
|----------|----------------------|
| 8204 | Standard Banana Plug |



Construction: Nickel plated brass body and nut. Tinned brass solder lug. Nickel-plated beryllium copper spring.

RETRACTABLE SHROUDED BANANA PLUG



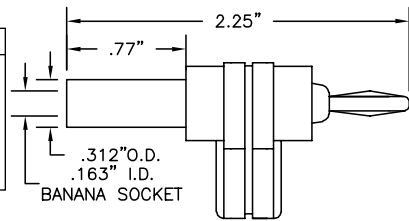
| Part No. | Description |
|----------|----------------------------------|
| 9388 | Retractable Shrouded Banana Plug |

Construction: Housing is a three piece molded nylon assembly with a wire collet for strain relief. Banana plug has a brass frame and beryllium copper contact spring; both are nickel plated. Wire connection is soldered. (IEC 1010 Compliant)

Colors: Black, red, yellow, green, blue and white.

STACKING RIGHT ANGLE STANDARD BANANA PLUG

| Part No. | Description |
|----------|---|
| 9307 | Stacking Right Angle Standard Banana Plug |

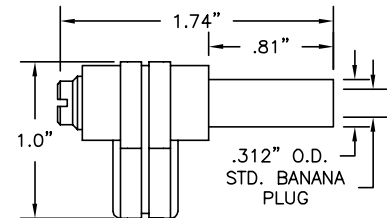


Construction: Nickel-plated brass body and socket. Nickel-plated beryllium copper spring. Plastic handle. Solderless assembly.

Colors: Available in red and black.

SHROUDED RIGHT ANGLE STANDARD BANANA PLUG

| Part No. | Description |
|----------|---|
| 9302 | Shrouded Right Angle Standard Banana Plug |



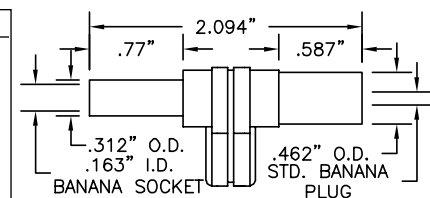
Fits most **FLUKE**, **B&K PRECISION**, **HP**, **BECKMAN**, **AMPROBE**, **METERMAN**, and **GREENLEE** instruments with recessed receptacles for shrouded plugs.

Construction: Nickel-plated brass body. Nickel-plated phosphor bronze spring. Plastic handle. Solderless assembly.

Colors: Black, brown, red, orange, yellow and violet.

STACKING SHROUDED RIGHT ANGLE STANDARD BANANA PLUG

| Part No. | Description |
|----------|---|
| 9305 | Stacking Shrouded Right Angle Std. Banana Plug/Socket |



Fits most **AMPROBE**, **BECKMAN**, **SIMPSON** and **TRIPLETT** instruments with recessed receptacles for shrouded plugs.

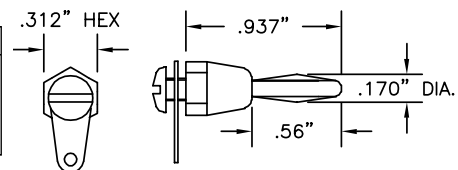
Construction: Male: Nickel-plated brass body. Nickel-plated beryllium copper spring.

Female: Nickel-plated beryllium copper socket. Plastic handle. Solderless assembly.

Colors: Available in red and black.

STANDARD BANANA PLUG FEMALE 6-32 THREAD MOUNTED

| Part No. | Description |
|----------|----------------------|
| 8205 | Standard Banana Plug |



Construction: Nickel plated brass body and screw. Tinned brass solder lug. Nickel-plated beryllium copper spring. Maximum panel thickness .187".

BANANA PLUGS

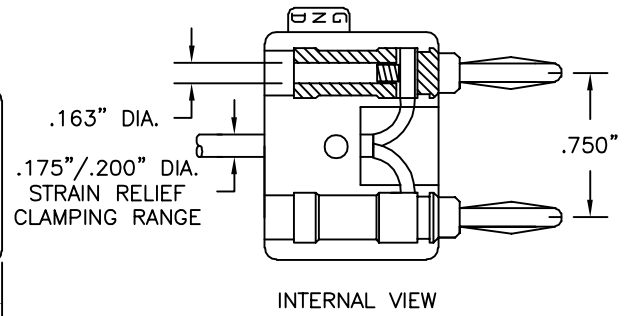
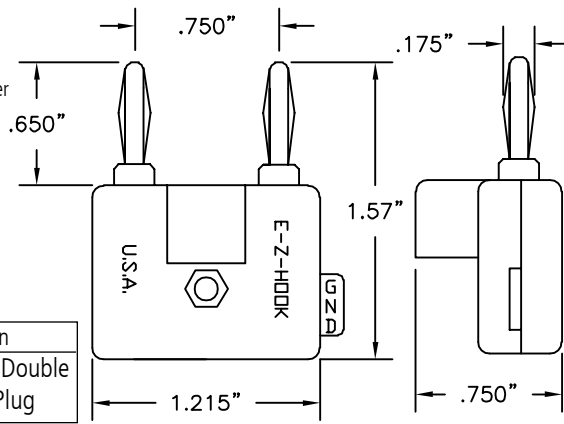
NO. DB750 STACKING DOUBLE BANANA PLUG

Construction:

Nylon handle. Nickel-silver spring. Nickel-plated brass socket. Solderless assembly.

Colors: Available in red and black.

| Part No. | Description |
|----------|-----------------------------|
| DB750 | Stacking Double Banana Plug |

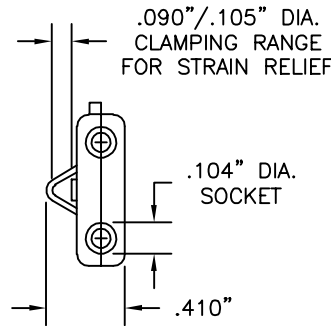
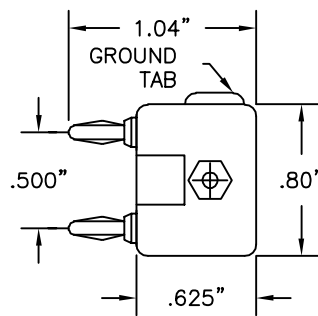


Construction:

Nylon handle. Beryllium copper spring. Music wire socket, nickel-plated. Solderless assembly.

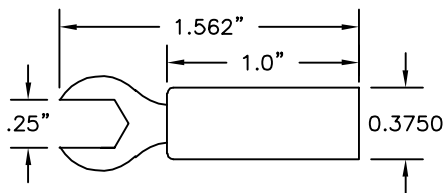
Colors: Available in red and black.

| Part No. | Description |
|----------|----------------------------------|
| DB500 | Stacking Double Mini Banana Plug |



INSULATED SPADE LUGS

.250" (6.35mm) INSULATED SPADE LUG

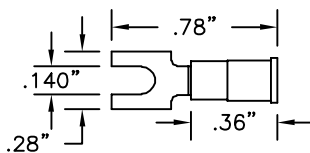


| Part No. | Description |
|----------|-----------------|
| 9208 | .250" Spade Lug |

Construction: Plastic handle; .050" (1.27mm) thick nickel plated brass lug. Solder assembly.

Colors: Available in red and black.

.140" (3.57mm) INSULATED SPADE LUG



| Part No. | Description |
|----------|--------------------------------------|
| 9209 | .140" Spade Lug for AWG22 to 18 Lead |

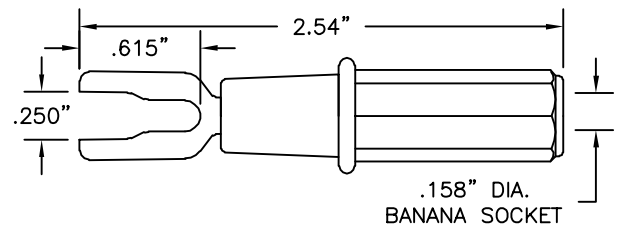
Insulation Maximum: .150" (3.81mm)

For No. 6 Screw—.140" (3.55mm)

Construction: Vinyl insulator. Tin-plated copper lug. Crimp on assembly.

Colors: Red.

SPADE LUG TO BANANA SOCKET, ACCEPTS SHROUDED BANANA PLUGS

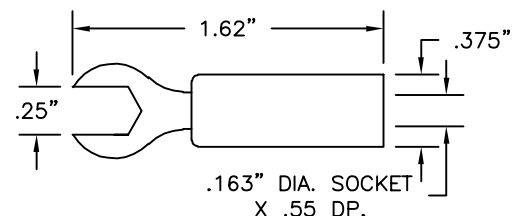


| Part No. | Description |
|----------|---|
| 9385 | Spade Lug (fits .25" and #8) to Banana Socket |

Construction: Nylon handle. Banana socket and spade lug are nickel-plated brass.

Colors: Black, red, yellow, green, blue and white.

.250" (6.35mm) INSULATED SPADE LUG TO STD. BANANA SOCKET



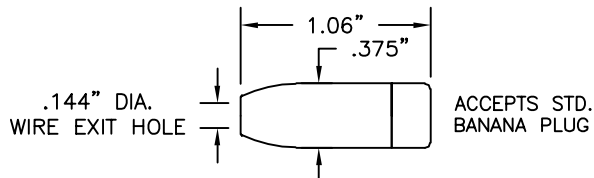
| Part No. | Description |
|--------------|---|
| 8020-(color) | .250" Insulated Spade Lug to Std. Banana Socket |

Construction: Housing is molded nylon; banana socket is machined brass; spade lug is brass, both are nickel-plated.

Colors: Available in red and black.

BANANA SOCKETS

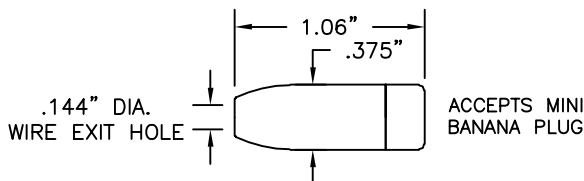
STANDARD BANANA SOCKET



| Part No. | Description |
|----------|------------------------|
| 9210 | Standard Banana Socket |

Construction: Nylon handle. Nickel-plated brass socket. Solder assembly.
Colors: Available in 10 colors. See inside back cover for details.

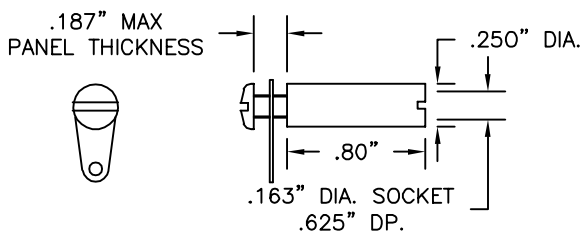
MINIATURE BANANA SOCKET



| Part No. | Description |
|----------|-------------------------|
| 9252 | Miniature Banana Socket |

Construction: Nylon handle. Nickel-plated brass socket. Solder assembly.
Colors: Available in 10 colors. See inside back cover for details.

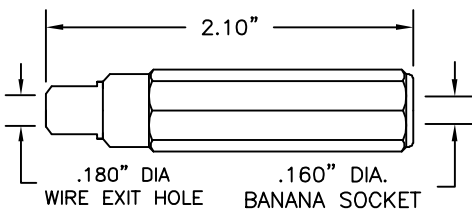
STANDARD BANANA SOCKET FEMALE 6-32 THREAD MOUNTED



| Part No. | Description |
|----------|------------------------|
| 8206 | Standard Banana Socket |

Construction: Nickel-plated brass body and screw. Tinned brass solder lug.

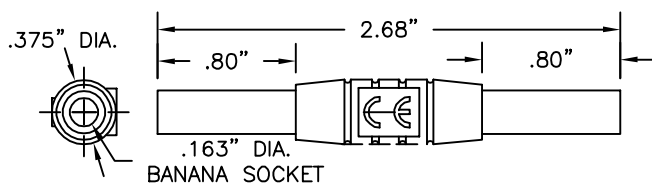
SHROUDED BANANA SOCKET, ACCEPTS SHROUDED BANANA PLUGS



| Part No. | Description |
|----------|--|
| 9387 | Shrouded Banana Socket, Accepts Shrouded Plugs |

Construction: Housing is a two piece molded nylon assembly with a wire collet for strain relief. The banana socket is nickel-plated brass. Wire connection is soldered.
Colors: Black, red, yellow, green, blue and white.

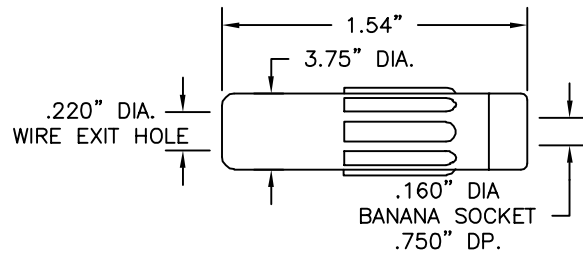
BANANA SOCKET ADAPTER



| Part No. | Description |
|----------|-----------------------|
| 9430 | Banana Socket Adapter |

Accepts standard and shrouded banana plugs. Ideal for lead extension.
Colors: Available in red and black.

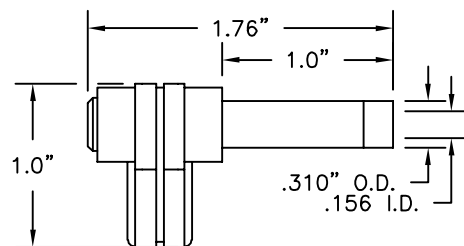
STANDARD BANANA SOCKET WITH LONG BODY AND LARGE WIRE EXIT HOLE TO ACCOMODATE HEAVY WIRE



| Part No. | Description |
|----------|---------------------------------------|
| 9251 | Standard Banana Socket with Long Body |

Construction: Plastic handle. Nickel-plated brass socket. Solder assembly.
Colors: Available in red and black.

SHROUDED RIGHT ANGLE STANDARD BANANA SOCKET



| Part No. | Description |
|----------|---|
| 9309 | Shrouded Right Angle Standard Banana Socket |

Fits most **SIMPSON** and **TRIPLETT** instruments with recessed plugs for shrouded receptacles.

Construction: Nickel-plated beryllium copper spring socket. Plastic handle. Solderless assembly.

Colors: Available in red and black.

E-Z-FLEX™ TEST ADAPTERS

| PART NO. | AWG | CONTACT DIA. | TYPE OF CONTACT |
|--------------|-----|----------------|-----------------|
| 9334 (color) | 22 | .030" (.762mm) | Socket |
| 9338 (color) | 22 | .030" (.762mm) | Pin |
| 9335 (color) | 20 | .040" (1.02mm) | Socket |
| 9339 (color) | 20 | .040" (1.02mm) | Pin |
| 9336 (color) | 16 | .062" (1.60mm) | Socket |
| 9340 (color) | 16 | .062" (1.60mm) | Pin |
| 9337 (color) | 12 | .094" (2.36mm) | Socket |
| 9341 (color) | 12 | .094" (2.36mm) | Pin |

DESCRIPTION: Banana socket end is brass tin plated. All the contact ends are gold plated. The flexible insulation is molded plastic. Socket accepts standard banana plugs.
Colors: Available in red and black.

